



TO LET

Part 1st, 2nd and 3rd Floors

Refurbishment completing late Feb 2023

Inchallan House
26 Howe Street
Edinburgh
EH3 6TG

- Full refurbishment currently underway, due to complete late February 2023
- Part 1st, 2nd and 3rd floors available
- Close proximity to a wealth of local amenities

LOCATION

26 Howe Street is located in Edinburgh's New Town and the premises are well-placed for access to the city centre and nearby transport links. Princes Street, Waverley Station and the York Place tram halt are all within 10 minutes walking distance. The area is also well-served by buses, with major bus routes running along both Howe Street and Dundas Street. The property benefits from a wealth of local amenities including restaurants, bars and independent retailers on the doorstep, as well as the nearby affluent area of Stockbridge which is a 5 minute walk away. Neighbouring occupiers include Sainsbury's, Sally Beauty and Tribe Yoga.



DESCRIPTION

The subjects comprise a mid-terraced Georgian townhouse and offer newly refurbished office accommodation on the part 1st, 2nd and 3rd floors. The building will benefit from an inhouse Pilates studio as Reform Pilates will be 1st floor tenants.

ACCOMMODATION

The available office space will be re-measured following completion of the refurbishment works, although currently comprise the following approximate net internal areas:

	Sq Ft	Sq M
Part First (Front)	776	72.09
Second	855	79.43
Third	732	68.00
TOTAL	2,363	219.52

LEASE TERMS

The premises are available on a Full Repairing and Insuring basis on lease terms to be agreed.

EPC

Office suites operating at an EPC of B.

LEGAL COSTS

Each party will be responsible for their own legal costs, with the ingoing tenant responsible for the payment of registration dues and any LBTT payable.

VAT

VAT is payable on all outgoing related to the occupation of the building.

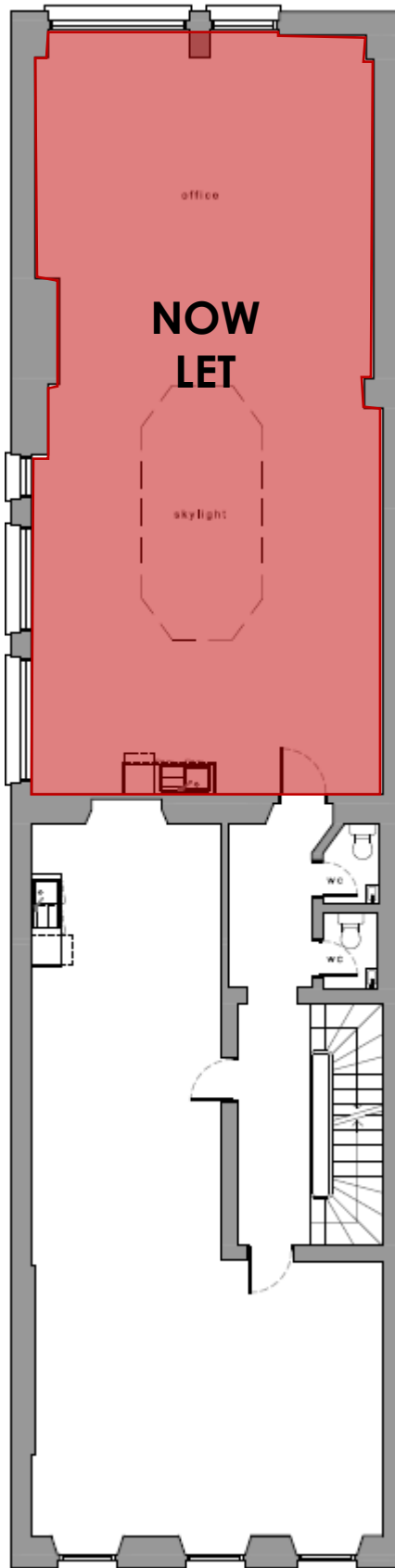
RATES

Business rates will differ depending on the suite / floor of interest and more information is available on request.

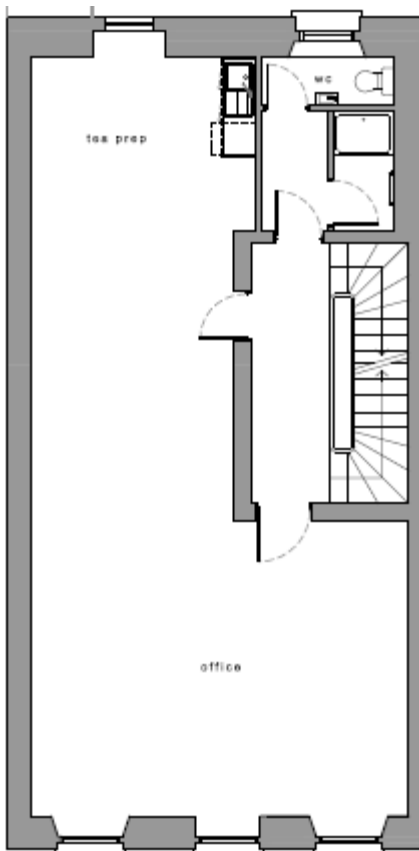
Some floors will be eligible for small business rates relief.

FLOORPLANS (Indicative)

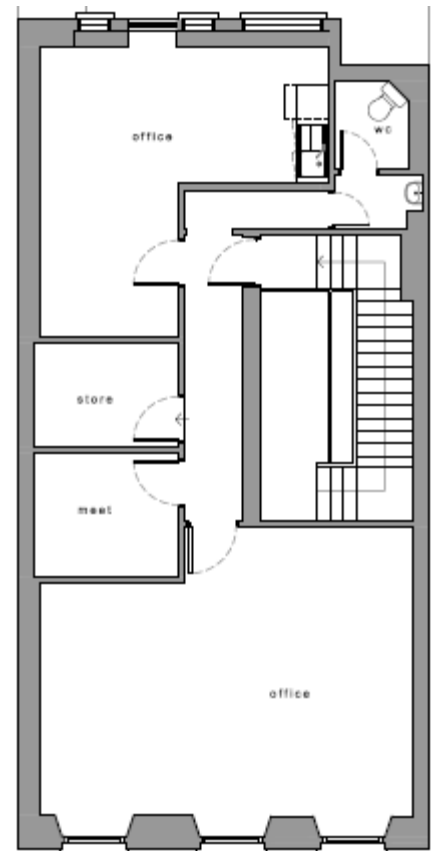
1ST FLOOR:



2ND FLOOR:



3RD FLOOR:



VIEWING & FURTHER INFORMATION



James Metcalfe

07786 623 282

james@cuthbertwhite.com

IMPORTANT NOTICE: CuthbertWhite Ltd for the Landlord of this property, whose agents they are, give notice that: 1. The particulars are intended to give a fair and substantially correct overall description for the guidance of intending tenants and do not constitute part of an offer or contract. Prospective tenants ought to seek their own professional advice. 2. All descriptions, dimensions, areas, reference to condition and necessary permissions for use and occupation and other details are given in good faith, and are believed to be correct, but any intending tenant should not rely on them as statements or representations of fact, but must satisfy themselves by inspection or otherwise as to the correctness of each of them. 3. No person in the employment of CuthbertWhite Ltd has any authority to make or give any representations or warranty whatever in relation to this property nor enter into any contract on behalf of the Landlord. 4. No responsibility can be accepted for any expenses incurred by intending tenants in inspecting properties which have been sold, let or withdrawn. Particulars prepared March 2023.